

KUMEŪ FILM STUDIOS

AUCKLAND, NEW ZEALAND



A unique experience in a land like no other

Based in Tāmaki Makaurau Auckland, Kumeū Film Studios is Aotearoa New Zealand's largest film studio complex spanning 27 ha (67 acres) and offering unparalleled opportunities for onsite filming. Meeting all your production needs is over 84,762 ft² (7,875 m²) of facilities space.

Kumeū Film Studios comprises three stages, ocean and dive tanks, diverse backlot forest and 2.8 ha (6.9 acres) of laydown area.

Location

Kumeū Film Studios is in north-west Tāmaki Makaurau Auckland, within the midst of the region's screen industry heartland. The area is close to rugged west coast beaches and forests which are renowned among global screen productions, and home to Oscar award-winning crew.

Auckland's central business district and international airport is a short drive away. Direct flights between Los Angeles and Auckland operate daily, providing convenient access for filmmakers and talent to and from New Zealand.



Stages

A & B Stages

Area of each stage:
25,147 ft² | 2,336 m²

Dimensions of each stage:
Width x length: 125 x 200 ft | 38.3 x 31 m
Height to grid: 44.5 ft | 13.56 m

Features:
Grid loading maximum: 20 tonnes | 20,000kg
2x 1000 kVA transformers

Our A & B Stages are identical purpose-built soundstages, equipped with house lighting, power outlets and compressed air recirculation. They have a grid catwalk for set and lighting rigs with a maximum loading capacity of 20 tonnes (20,000 kg).

The main stage entrance through an elephant door measuring 19.7 x 20.7 ft (6 x 6.3 m), with an additional rear roller door.

Internal access between the stages is provided by a rear corridor with toilet facilities.

W Stage

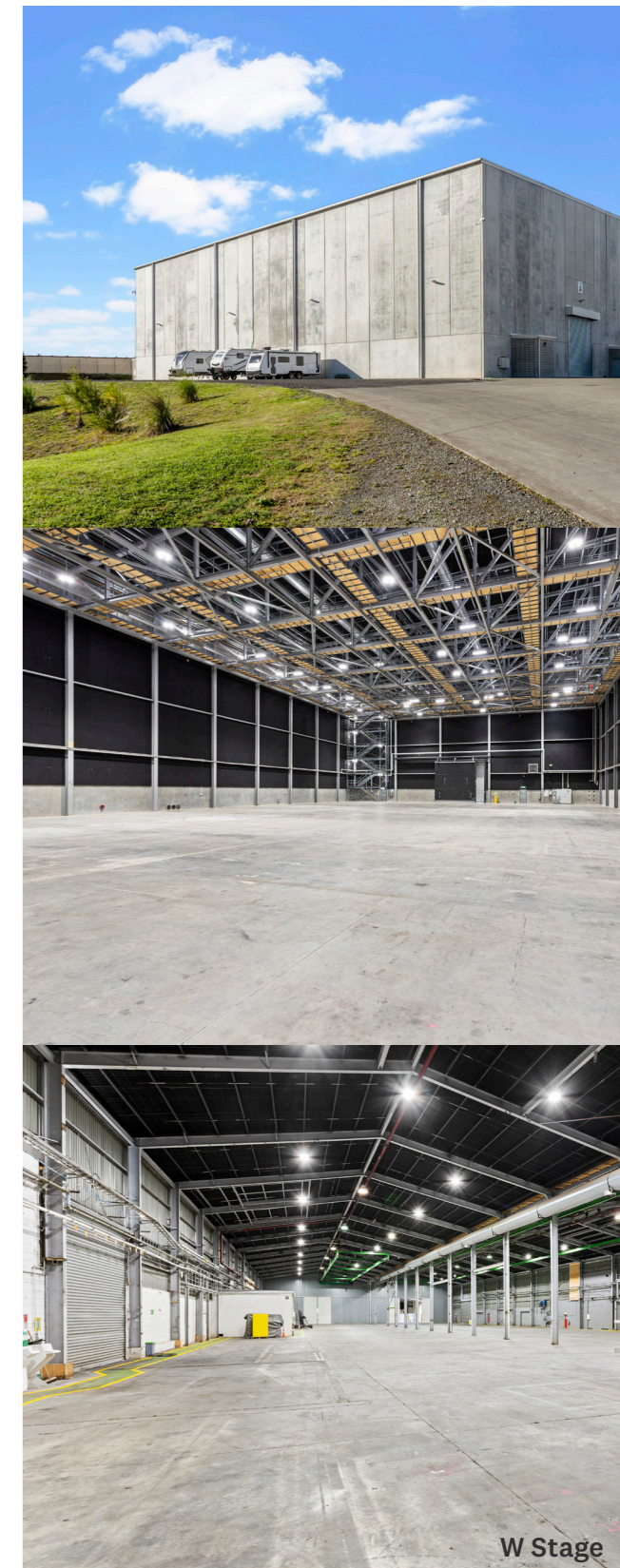
Area:
43,448 ft² | 4,037 m²

Dimensions:
Width x length: 130 x 330 ft | 40 x 100 m
Pitched ceiling height: 30-36 ft | 9-11 m

Features:
1000 kVA transformer, gantry crane, fixing points for scaffold and lighting.

The W Stage is a converted warehouse space with added sound insulation on the roof. It features multiple external access points and internal access to the adjacent art department workrooms and construction workshops.

The W Stage can be utilised as additional storage space, a venue for workshops or for set building. There are adjacent toilet facilities.





Australasia's foremost studio for water-based productions

Dive Tank

Diameter: 59.5 ft | 18 m

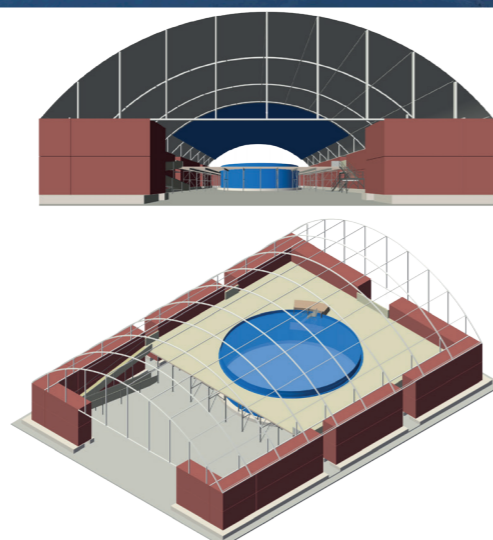
Depth: 16 ft | 4.9 m

Volume: 334,656 gallons | 1.27 million litres



Our purpose-built dive tank is under a covered area with ample platform space and can be utilised for light or dark water scenes. Within the tank are permanent rigging points. It also boasts crystal-clear water which can be heated to a maximum of 91°F (33°C).

A hot tub is positioned on the platform with shower facilities adjacent.



Ocean Surface Tank

Area: 15,672.25 ft² | 1,456 m²

Width: 105 ft | 32 m

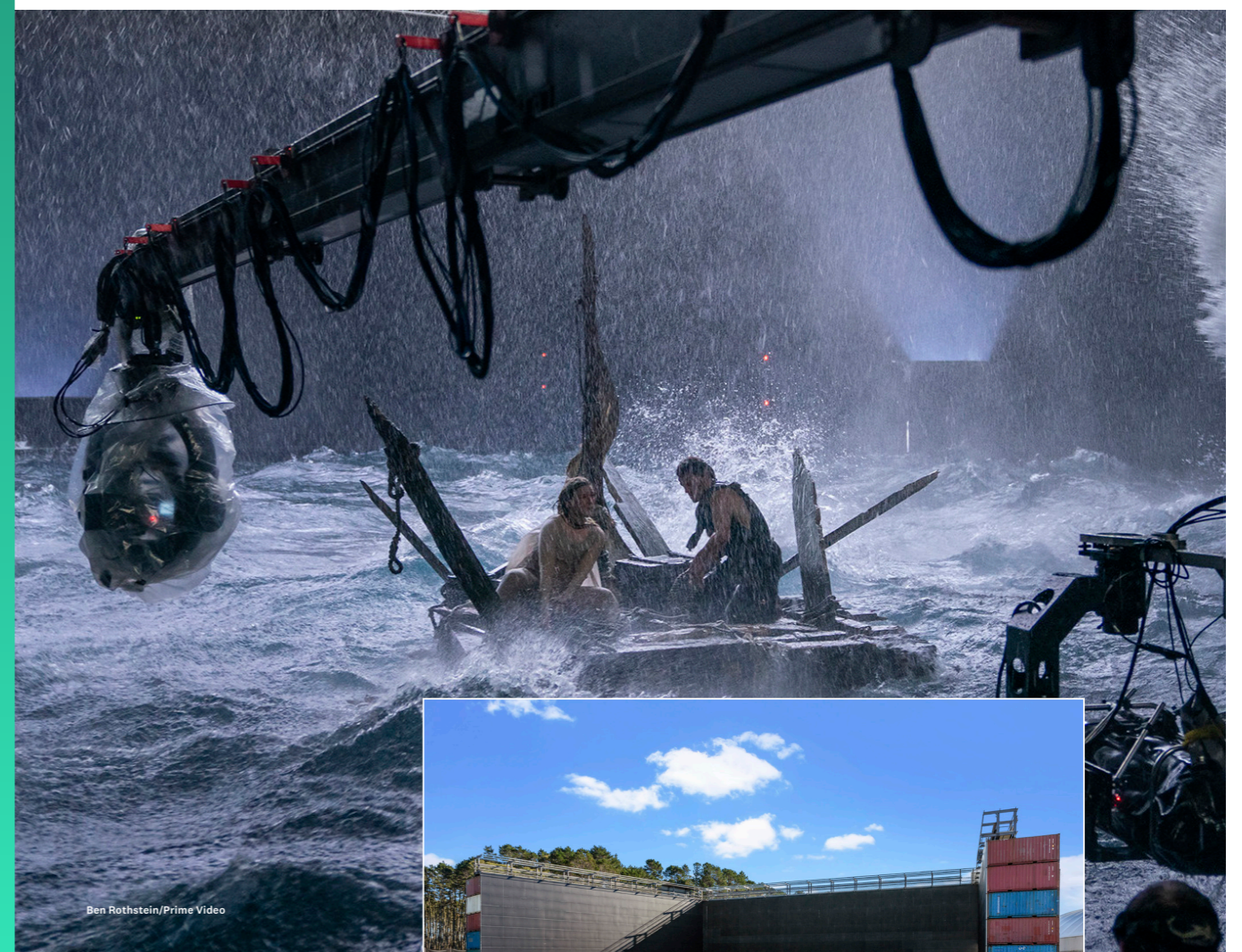
Length: 128-170 ft | 39-52 m

Depth: 13 ft | 4 m

Volume: 792,576 gallons | 3 million litres minimum

Our outdoor ocean surface tank is surrounded by a U-shaped green screen standing at 42.7 ft (13 m) that can hold rigging and silks. The tank can be heated to a maximum 89°F (32°C) and there are adjacent shower facilities.

There is substantial working space available around the tank for all your production's equipment including stunt and special effects rigs, cranes and vehicles.



World class talent and productions

Facilities

Kumeū Film Studios supports all your production needs with over 84,762 ft² (7,875 m²) of facility space within the main building.

The 27 ha (acres) site caters to world-building. The site is secure with ample parking, crew amenities and high speed dark fibre network.

Offices

Kumeū Film Studios offers over 8,900 ft² (830 m²) of turn-key ready office spaces. This includes an open plan production office, private offices, meeting rooms and boardroom, with kitchen and toilet facilities.

Independently designated office spaces are available for multiple departments such as editorial and art departments. Set decorating, prop and costume workrooms also feature independent office spaces.

Art Department

Set decorating and prop workrooms offer ample space for crafting and storage. The workrooms are scalable and moveable, with large internal and external entry points. They also offer direct access to construction workshops and the W Stage.

Construction Mill

The construction mill measuring 38,502 ft² (3,577 m²) offers concrete floors, multiple large external access ways for HGV access, a custom-built dust extraction system, and three phase power. There are also dedicated workshops designed for steel, paint, plaster and sculpture including spray booths and dangerous goods cabinets.

The mill has direct access into the art department workrooms and is adjacent to the W Stage, which can be utilised as an additional workshop area.

Costume and Make Up

The main workroom is a large open plan area with dressing rooms, workbenches, racking and shelving throughout. Adjacent to the main workroom are designated laundry, fabrication, dye and textile workrooms.

The hair and makeup workroom is equipped with hair washing facilities and multiple makeup stations.

Forest and Ponds

The site includes a beautiful 12ha (29 acre) forest available for on location filming, with multiple tracks and access points.

Onsite retention ponds with riparian planting support the site's sustainability.

Laydown Areas

Across the site is a total of approximately 2.8ha (7 acres) of large laydown areas that are suitable for any production need, including exterior sets, storage and additional parking.

Our largest area sits at 194,000 ft² (18,000 m²) and our smallest at 33,174 ft² (3,082 m²) with a surrounding green screen wall.

Portables and Canopies

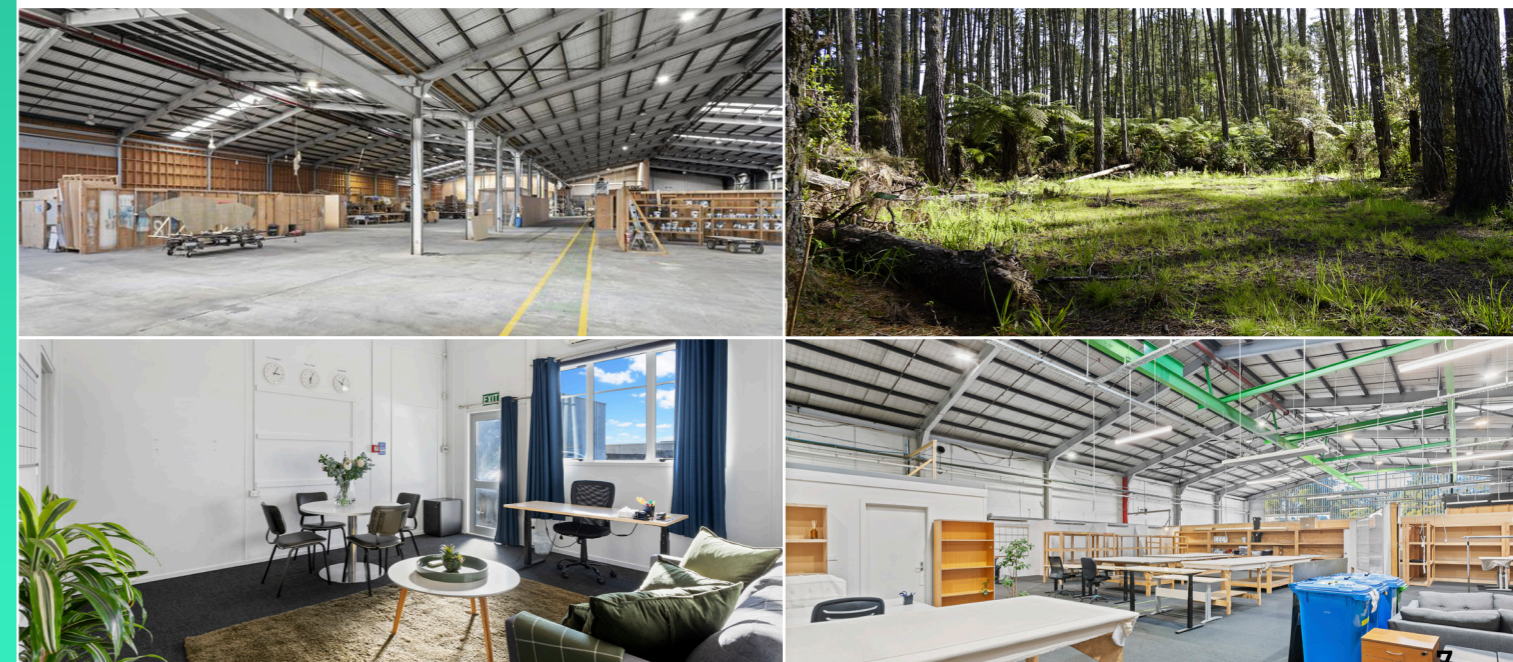
Our portables provide additional office space or workspaces. There are a range of canopies across the site to meet all your production's storage and operational needs.

Parking

There is substantial on-site parking available for unit, tech, transport, and crew. There are approximately 1,500 parking spaces around site, including individual spaces allocated outside the production, art department and editorial offices.

Security

A permanent security hut is positioned at the front gate with 24-hour remote CCTV monitoring, and secure fencing circulating the entire site.



Kumeū Film Studios Map

Gate 4



Gate 1

Gate 2

Gate 3

1 Ocean Surface Tank

2 Dive Tank

3 Green Screen

4 Stage W

5 Construction Mill & Workrooms

6 Offices

7 Stage A

8 Stage B

Contact

Studio Manager: Eric Stark

T: +64 21 946 626

E: eric.stark@aucklandnz.com

Physical Address:

116 Access Road

Kumeū

Auckland 0810

New Zealand

Postal Address:

PO Box 5561

Wellesley Street

Auckland 1141

New Zealand

